

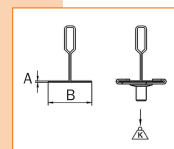
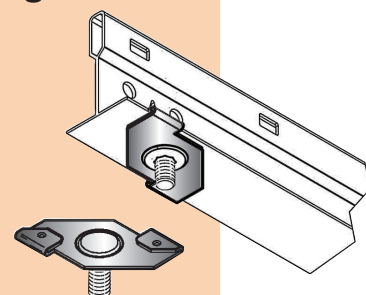


Elementos de fijación rápida
Elements de fixation rapide

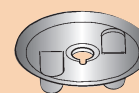
Quick attachment devices
Schnellen befestigungselemente



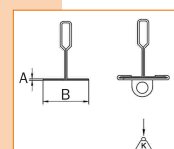
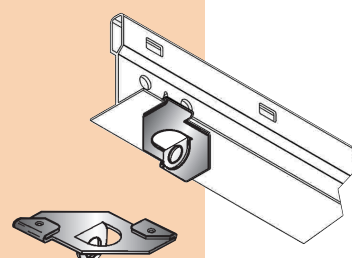
B mm.	A mm.	M6xL	Kg.		Cód.	Ref.	€/100
Acabado / Finition / Finishing / Endverarbeitung: CINCADO							
25	1'5	M6 x 9	20	100	1001367150	ACC25 M6x9 ZN (140 T-9 ZN)	53,80
25	1'5	M6 x 16	20	100	1001367250	ACC25 M6x16 ZN (140 T-16 ZN)	60,80
25	1'5	M6 x 25	20	100	1001367350	ACC25 M6x25 ZN (140 T-25 ZN)	74,90
Lacado blanco - Laqué blanc - White lacquer - Weisslackiert							
25	1'5	M6 x 9	20	100	1001367190	ACC25 M6x9 L (140 T-9 L)	107,60
25	1'5	M6 x 16	20	100	1001367290	ACC25 M6x16 L (140 T-16 L)	112,20
25	1'5	M6 x 25	20	100	1001367390	ACC25 M6x25 L (140 T-25 L)	121,70



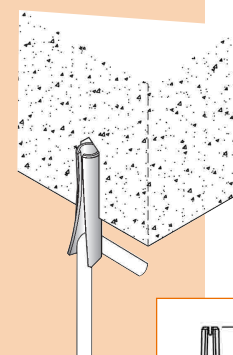
M	Kg.		Cód.	Ref.	€/100
Acabado / Finition / Finishing / Endverarbeitung: CINCADO					
M6	20	100	1001367450	ACN ZN (290 ZN)	30,30



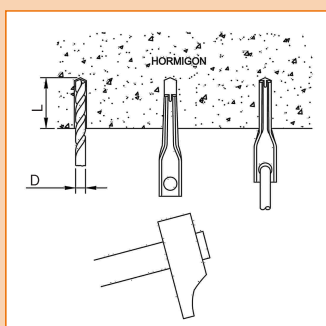
B mm.	A mm.	∅	Kg.		Cód.	Ref.	€/100
Acabado / Finition / Finishing / Endverarbeitung: CINCADO							
25	1'5	5'4	20	100	1001367550	ACT ZN (141 ZN)	29,20
Lacado blanco - Laqué blanc - White lacquer - Weisslackiert							
25	1'5	5'4	20	100	1001367590	ACT L (141 L)	86,50



∅V mm.	Prof. min. anclaje "L" mm.	∅D mm.	Kg.		Cód.	Ref.	€/100
4	20	8	40	100	10013530	270	14,10



**MONTAJE - MONTAGE -
INSTALLATION - MONTAGE:**



ATENCIÓN:

Usar sólo en **hormigón no fisurado**.
Use only on **non-cracked concrete**.

